

Maths:



Number:

- Multiplication and Division
- Times tables

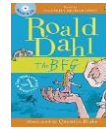
Measurement:

- Mass
- Capacity
- Length

English:

Fantasy narratives:

- Recount (diary entry)
- Character descriptions
- Wanted posters
- Instructions



Science:

Living Things and their Habitats:

- Grouping animals
- Vertebrates/ Invertebrates



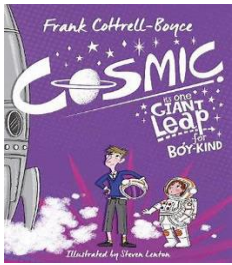
Art:

Plant Art:

- Botanical illustrations
- Tints, shades and tones of colour
- Orla Kiely
- Creating depth



Reading:



What are we learning this half term?

Autumn
B



Lower Key
Stage 2

Meadow Park

Patience, Guidance and Determination

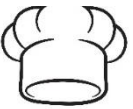
Important Dates:

Pupil Review Day- 20th November, 2pm until 4pm
Christmas Fayre: 18th December 2pm
End of term; 20th December



Food: Food Provenance

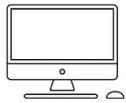
- Cookies
- Pasta
- Cake
- Biscuits
- Ice Cream



Computing:

Creating Media

- Video
- Web page



PE: Functional Skills / Gymnastics

Peer and self-assessment

Performance



Life Skills:

We are learning lots of new skills including

- First Aid
- Making Cakes
- Water Safety
- Calling 999



PSHE:

Throughout PSHE this term we will be learning about four topics:

- Mental Health
- Physical health
- Wellbeing



Personal Development:

In PD this term we are learning all about our health and wellbeing, how to develop our Patience and building strong, meaningful relationships.



Enrichment:

- Trip- Cinema
- Workshop- Zones of regulations
- Enrichment activities
- Class challenge- Christmas Fayre
- Gaming
- Enterprise-Christmas Fayre

